

Egg Harbor Fire Department and First Responders Standard Operating Guidelines

SUBJECT: CHAIN OF COMMAND

SOP 1212

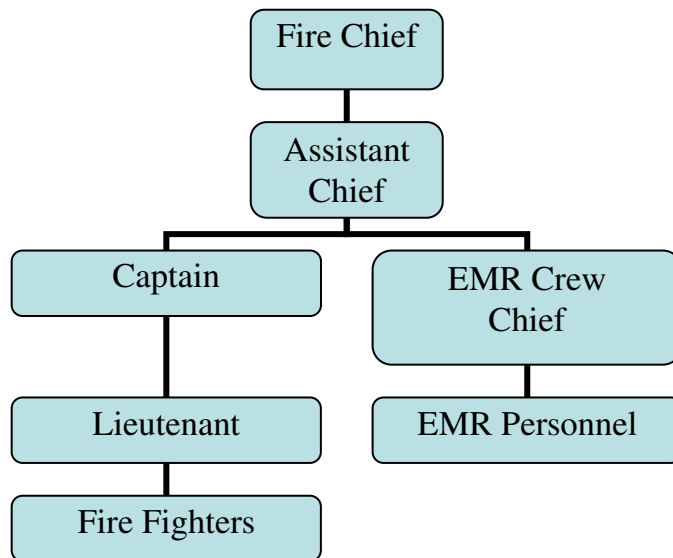
PURPOSE: To provide a specific procedure to follow when a member is engaging in written or verbal communications with another member.

SCOPE: This policy shall apply to all members of the Egg Harbor Fire Department.

PROCEDURE:

It is the responsibility of each member to know the Chain of Command of the Egg Harbor Fire Department. All members shall be accountable to each other regarding the ascending or descending Chain of Command. Members can assume that unless otherwise stated, the Chain of Command as established in this SOP is being adhered to. When an occasion arises that the Chain of Command is not followed it is the responsibility of the members participating in this exception to notify the affected parties. The Chain of Command is as follows (see charts below).

Operational Chart



Organizational Chart

